



## YARD DUTY AND SUPERVISION POLICY

### PURPOSE

To ensure school staff understand their supervision and yard duty responsibilities.

### SCOPE

This policy applies to all teaching and non-teaching staff at Baringa School, including education support staff, casual relief teachers and visiting teachers.

### POLICY

Appropriate supervision is an important strategy to monitor student behaviour and enables staff to identify and respond to possible risks at school as they arise. It also plays a vital role in helping schools to discharge their duty of care to students.

The Principal is responsible for ensuring that there is a well organised and responsive system of supervision and yard duty in place during school hours, before and after school, and on school excursions and camps and other school activities.

School staff are responsible for following reasonable and lawful instructions from the Principal, including instructions to provide supervision to students at specific dates, times and places.

#### Before and after school

Baringa School's grounds are supervised by school staff from 9:00am until 3pm. Outside of these hours, school staff will not be available to supervise students. Students who attend school from 9am onwards will be supervised by classroom staff in their allocated classroom.

Parents and carers will be advised through text, newsletter and a phone call if necessary that they should not allow their children to attend Baringa School outside of these hours unless a special exemption is granted by the Principal. Families will be encouraged to contact the administration office on 51271744 for more information about school supervision hours should they need it.

If a student arrives at school before supervision commences at the beginning of the day, the Principal or nominee staff member will, as soon as practicable, follow up with the parent/carer to:

- advise of the supervision arrangements before school
- request that the parent/carer make alternative arrangements

If a student is not collected before supervision finishes at the end of the day, the Principal or nominee staff member will consider whether it is appropriate to:

- attempt to contact the parents/carers
- attempt to contact the emergency contacts
- contact Victoria Police and/or Child Protection to arrange for the supervision, care and protection of the student.

### Yard duty

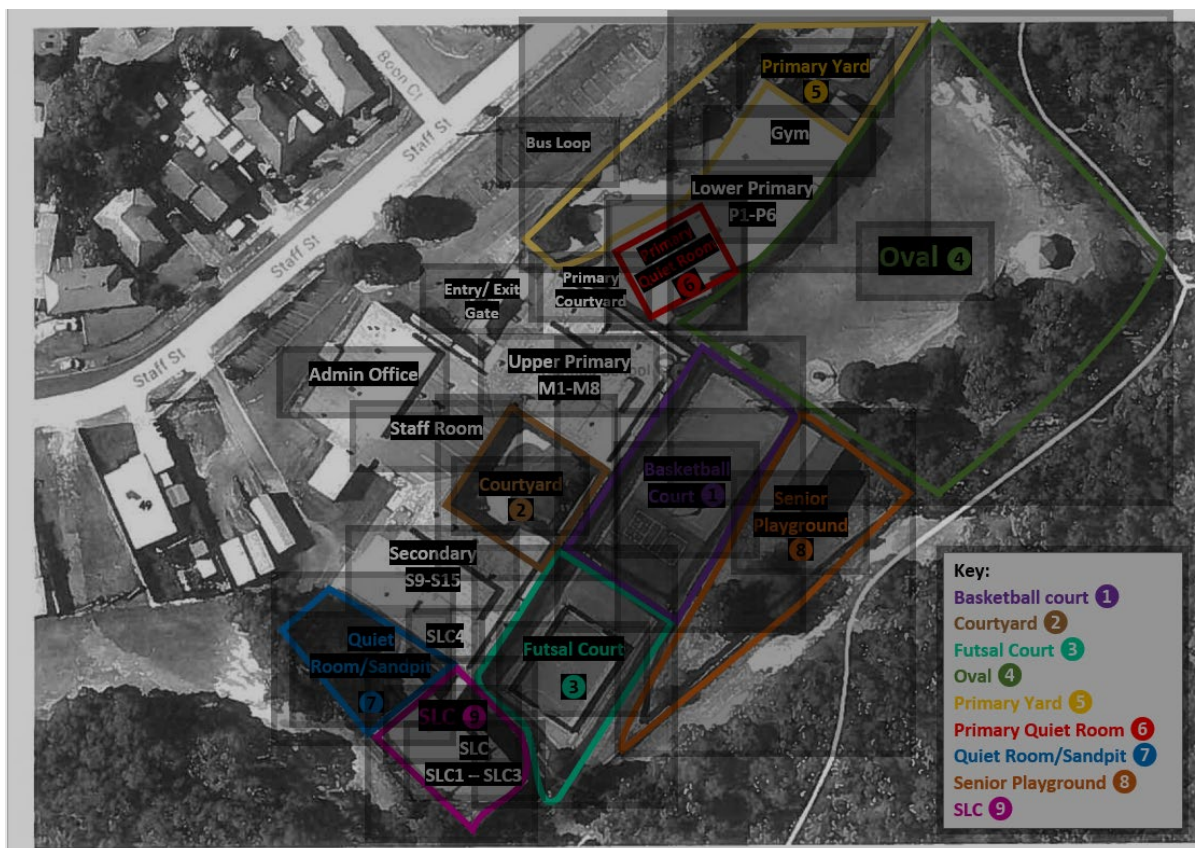
Relevant staff at Baringa School are expected to assist with yard duty supervision as per their contractual arrangement and will be included in the weekly roster.

The Daily Organiser is responsible for preparing and communicating the yard duty roster on a regular basis. At Baringa School, staff will be designated a specific yard duty area to supervise.

### **Yard duty zones**

The designated yard duty areas for our school as at Term 4, 2021 are:

<b>Primary Yard</b>	<b>Big Yard</b>
Primary SWELL	Secondary SWELL
Primary Yard 1	Basketball Court
Primary Yard 2	Senior Playground
Primary Yard 3	Futsal Court
Primary Yard 4	Courtyard
	Oval
	SLC outside/sandpit area
	Individual Supervision
M5	



## Yard duty equipment

School staff must:

- wear a provided safety/hi-vis vest whilst on yard duty. Each staff member has their own vest
- be familiar with the yard duty information, including zones and safety planned students
- distribute and pack up sport and sandpit equipment as needed

Yard duty equipment must be returned after the period of supervision or handed to the relieving staff member.

## Yard duty responsibilities

Staff who are rostered for yard duty must remain in the designated area until they are replaced by a relieving staff member.

During yard duty, supervising school staff must:

- methodically move around their designated zone, actively supervising
- be alert and vigilant
- intervene immediately if potentially dangerous or inappropriate behaviour is observed in the yard
- enforce behavioural standards and implement appropriate consequences for breaches of safety rules, in accordance with any relevant disciplinary measures set out in the school's Student Engagement policy
- ensure that students who require first aid assistance receive it as soon as practicable

- log any incidents or near misses as appropriate on the schools Sentral reporting system

If being relieved of their yard duty shift by another staff member (for example, where the shift is 'split' into 2 consecutive time periods), the staff member must ensure that a brief but adequate verbal 'handover' is given to the relieving staff member in relation to any issues which may have arisen during the first shift.

If the supervising staff member is unable to conduct yard duty at the designated time, they should contact the Daily Organiser with as much notice as possible prior to the relevant yard duty shift to ensure that alternative arrangements are made.

If the supervising staff member needs to leave yard duty during the allocated time, they should contact the Administration Office and should where possible stay in the designated area until the relieving staff member has arrived in the designated area.

If the relieving staff member does not arrive for yard duty, the staff member currently on duty should notify the Administration Office and should where possible stay in the designated area until a relieving staff member has arrived.

Students will be encouraged to speak to the supervising yard duty staff member if they require assistance during recess or lunchtime.

### Classroom

The classroom teacher is responsible for the supervision of all students in their care during class.

If a student is asked to leave or chooses to leave the classroom please notify appropriate staff and follow process in accordance with our student wellbeing and engagement policy and our duty of care Policy.

If a teacher needs to leave the classroom unattended at any time during a lesson, they should first contact M5 (wellbeing team) or the school Administration Office for assistance. The teacher should then wait until a replacement staff member has arrived at the classroom before leaving.

### School activities, camps and excursions

The Principal and leadership team are responsible for ensuring that students are appropriately supervised during all school activities, camps and excursions, including when external providers are engaged to conduct part or all of the activity. Appropriate supervision will be planned for school activities, camps and excursions on an individual basis, depending on the activities to be undertaken and the level of potential risk involved.

### Digital devices and virtual classroom

Baringa School follows the Department's [Cybersafety and Responsible Use of Technologies Policy](#) with respect to supervision of students using digital devices.

### Students requiring additional supervision support

Sometimes students will require additional supervision, such as students with disability or other additional needs. In these cases, the Principal or delegate will ensure arrangements are made to roster additional staff as required. This may include on yard duty, in the classroom or during school activities.

### Workplace learning programs

When students are participating in workplace learning programs, such as work experience, school-based apprenticeships and traineeships, and structured workplace learning, the safety and welfare of the student is paramount. Organising staff are required to follow all applicable Department of Education and Training policies and guidelines in relation to off-site learning, including policy and guidelines on the safety and wellbeing of students. Refer to:

- [Structure Workplace Learning](#)
- [School Based Apprenticeships and Traineeships](#)
- [Work Experience](#)
- [School Community Work](#)

### Supervision of student in emergency operating environments

In emergency circumstances our school will follow our Emergency Management Plan, including with respect to supervision.

In the event of any mandatory period of remote or flexible learning our School will follow the operations guidance issued by the Department.

## COMMUNICATION

This policy will be communicated to our school community in the following ways:

- Included in staff induction processes
- Discussed at staff briefings or meetings, as required
- A link included in the staff induction booklet
- Produced on request from the administration office

Information for parents and students on supervision before and after school is available on our school website.

## FURTHER INFORMATION AND RESOURCES

- the Department's Policy and Advisory Library (PAL):
  - [Child Safe Standards](#)
  - [Cybersafety and Responsible Use of Technologies](#)
  - [Duty of Care](#)
  - [Excursions](#)
  - [School Based Apprenticeships and Traineeships](#)
  - [School Community Work](#)
  - [Structured Workplace Learning](#)
  - [Supervision of Students](#)
  - [Visitors in Schools](#)
  - [Work Experience](#)

## POLICY REVIEW AND APPROVAL

Policy last reviewed	30 <sup>th</sup> November 2021
Approved by	Principal – Kelly Methers
Next scheduled review date	November 2022

This policy will also be updated if significant changes are made to school grounds that require a revision of Baringa School yard duty and supervision arrangements.